



## CITY MUSEUM, SCIENCE CENTRE SURAT

*Interior Design for a Museum*

Client:	Surat Municipal Corporation
Site Location:	City Light Road, Athwa, Surat Gujarat 395007
Design Area:	17750 sq ft / 1650 sq m
Cost of Project:	Confidential
Year of Completion:	2008
Services:	Interior Design
Firms Involved:	EssTeam



## THE PROJECT:

The project was an open competition project won by EsTeam in 2008 organised by Surat Municipal Corporation. Post the floods of 2006, the Surat City Museum was to be moved to its new home at the newly constructed Science Centre, a flashy building in form finished concrete. The design was a collaborative efforts by an enthusiastic team of Interior Designers, Mechanical Engineer and Graphic Designer. The high point of this design is the immensely flexible display and lighting system that allows lot of freedom to the curator to shift or change things with lot of ease to keep the Museum vibrant.

## THE SITE:

The site consisting of 17,750 sq ft area is in a very posh locality of Surat city. The idea was to design the display and the interiors for the valuable artifacts as well as rare collection of the existing City Museum to be moved into the new premise. It is divided into two levels with a central ramp connecting them.

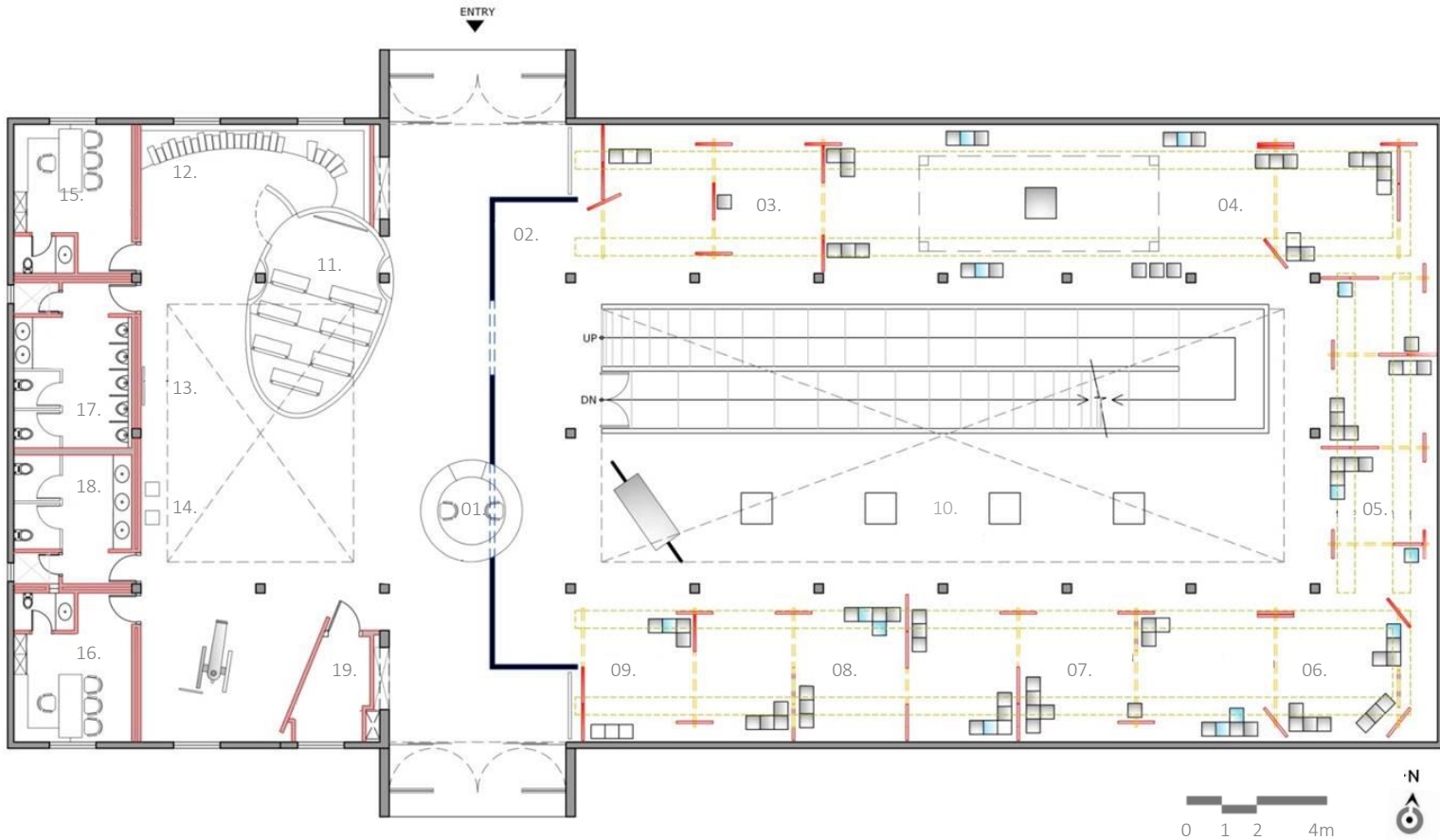


## MUSEUMS ARE BORING!

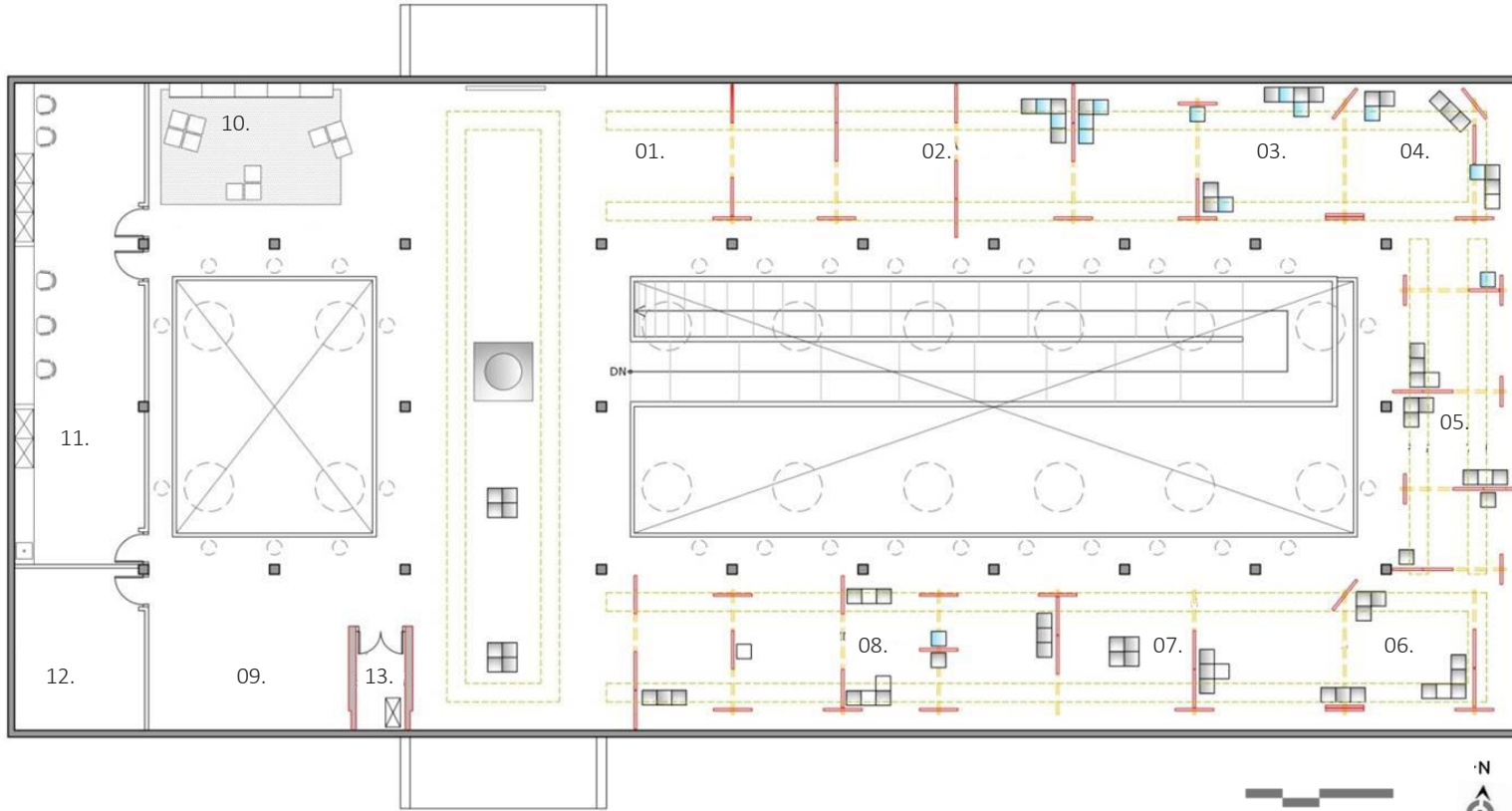
They look the same and have the same stale feel every time we go there. History is very boring! Who is interested in History of my City, my Country or my Planet anyways! The world is changing faster than the Historians can even note it.

Accepting this mammoth challenge to bring people back to the Museum, we set out on the design journey. The to-be new home of the museum was a 18,000 square feet of a then, newly constructed Museum Building as part of the Science Centre at Surat. Before this the museum existed in a 1500 square feet space in the walled city area and was severely damaged during the horrifying floods of 2006. The new building is constructed in form finished reinforced cement concrete. We decided to respect the architect's space vision and in principle decided not to tamper with the surface finish. The next job we did was to establish our design intent:

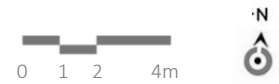
- To design an innovative system for display and lighting that gives immense flexibility to the curator to accommodate change of display, the space sizes and the circulation pattern.
- To do justice to the immensely valuable collection by giving adequate space and information to each item on display.
- To create an audio-video experience that would attract lot of people who do not enjoy reading the info

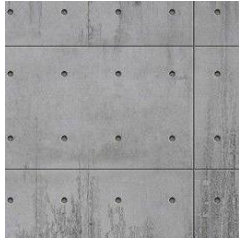


- 01. RECEPTION
- 02. SELF – LIT PARTITION
- 03. ARMS & ARMORY
- 04. WOOD WORK
- 05. JAPANESE PORCELIAN
- 06. BRITISH PORCELIAN
- 07. CHINESE PORCELIAN
- 08. POTS & JARS
- 09. CITY GALLERY
- 10. SCULPTURES
- 11. A.V. ROOM
- 12. WAITING
- 13. SVP MURAL
- 14. KIOSK
- 15. DEPUTY DIRECTOR'S CABIN
- 16. CURATOR'S CABIN
- 17. G. TOILET
- 18. L. TOILET
- 19. ELECTRICAL ROOM



- 01. PAINTINGS
- 02. MINIATURES & MANUSCRIPTS
- 03. COINES & CURRENCY
- 04. PHILATELIC
- 05. POSTAL STAMPS
- 06. TEXTILE & JARI WORK
- 07. ORNAMENTS & IVORY
- 08. BRONZE & BIDRI WORK
- 09. TEMPORARY DISPLAY AREA
- 10. KIDS REFERENCE SECTION
- 11. STAFF CABIN
- 12. STORE/ PREPARATION ROOM
- 13. ELECTRICAL ROOM





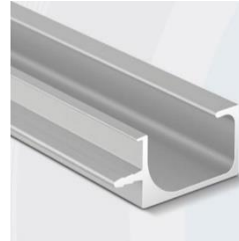
FORM FINISHED  
CONCRETE



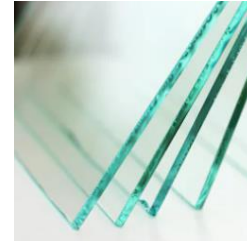
IN-SITU TERRAZO



PAINTED MILD  
STEEL



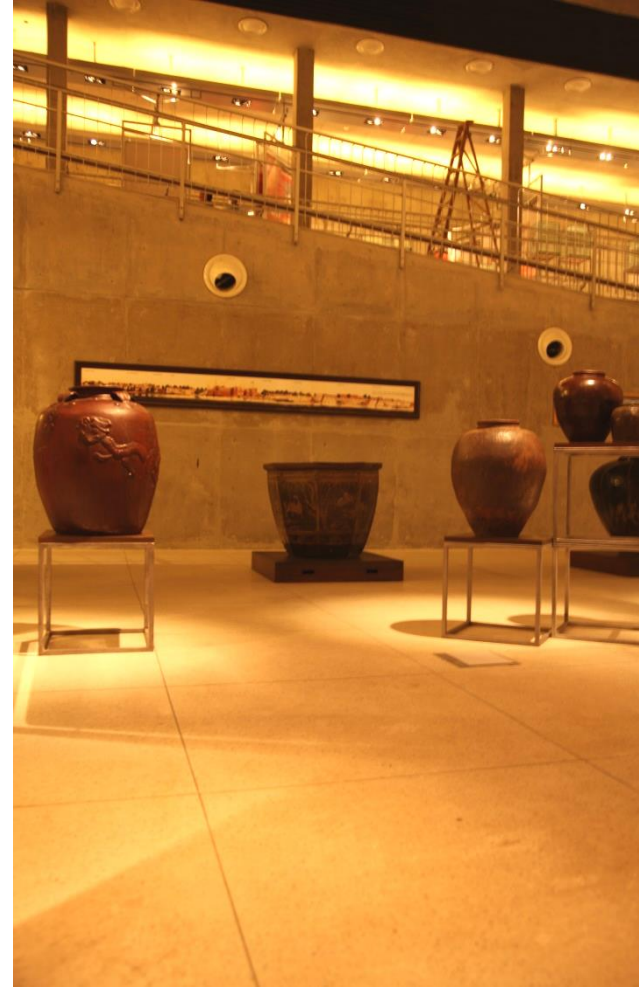
ALUMINIUM PROFILE



GLASS



CENTRAL RAMP CONNECTING FLOORS



CENTRAL RAMP CONNECTING FLOORS





Movement 1: Rotation along vertical axis on a pivot ( lock at every 45 degree )



Movement 2: Each of the three panels on the aluminium beam slides along the beam

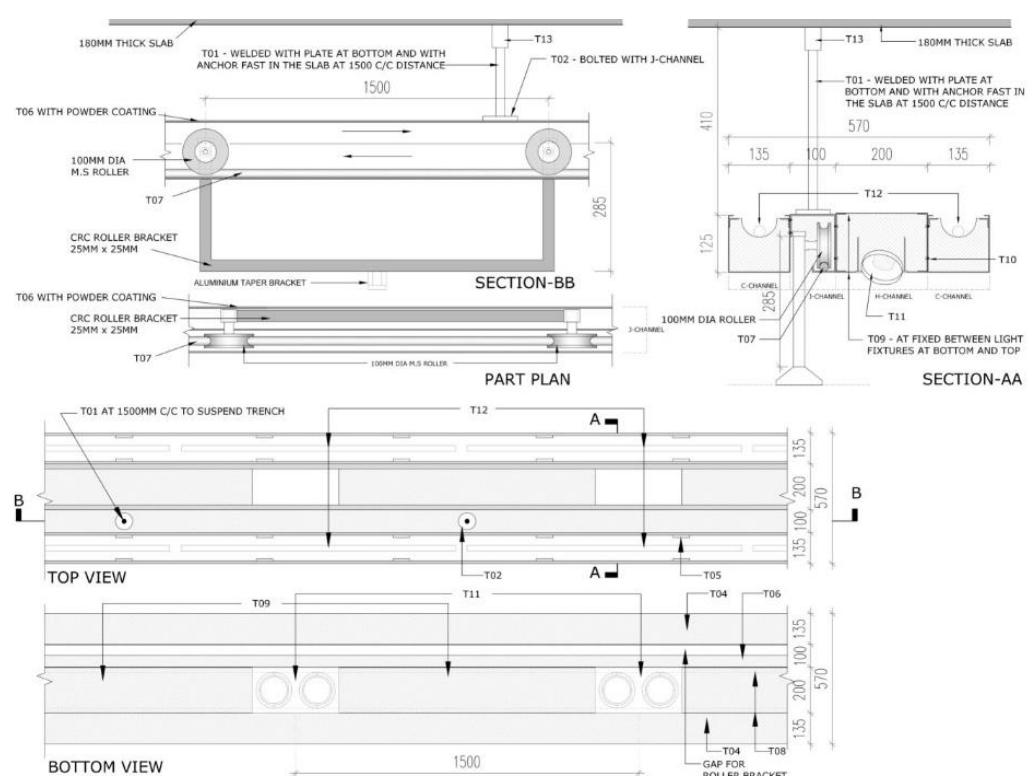
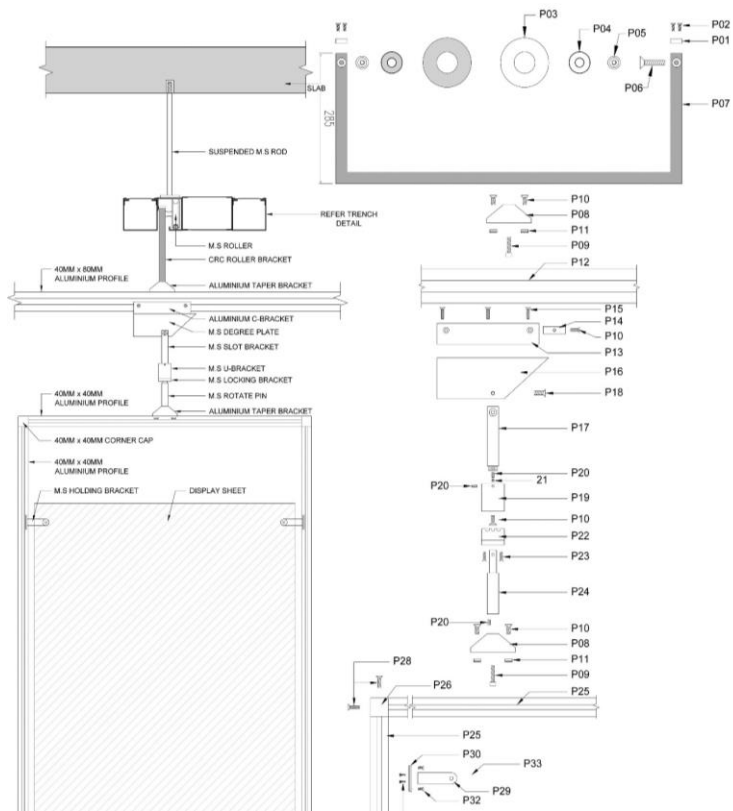


Movement 3: The entire beam ( along with the panels ) slides along the lighting trench

## THE FLEXIBLE DISPLAY PANEL SYSTEM

The key feature of the museum was the large non- static display panels hanging on a pivot that is suspended on a beam bar. The assembly offers endless possibilities for the curator and empowers to re-arrange the entire display system so as to create stunning visual compositions and a different circulation path each time. There are three different movements:

- a. Panels can be rotated at an angle of 45 degree on central pivot.
- b. Panels can be slid along the aluminium beam to create various circulation option.
- c. The entire beam ( along with the panels ) slides along the light fitting assembly to create spaces of different sizes.



The lighting integrated with this assembly can move on 2 axes to project light on the panels in various positions

Above detailed drawings show the detailed assembly of panel system. This assembly also accommodates lighting which can be moved on 2 axes to project light on the panels in various positions.

## 02. FLEXIBLE DISPLAY PANEL ASSEMBLY



03. FLEXIBLE DISPLAY PANEL- DISPLAY AREA



#### PERMUTATIONS AND COMBINATIONS

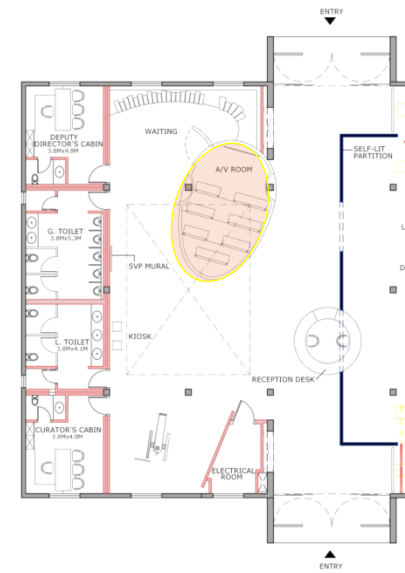
These 4 pictures are taken from the same point to demonstrate some of the endless possibilities generated by this display and lighting system. Since the entire assembly is suspended from top, it makes the cleaning of the space very easy. The graphic in the panel is easy to replace as and when the display object or the arrangement configuration changes.



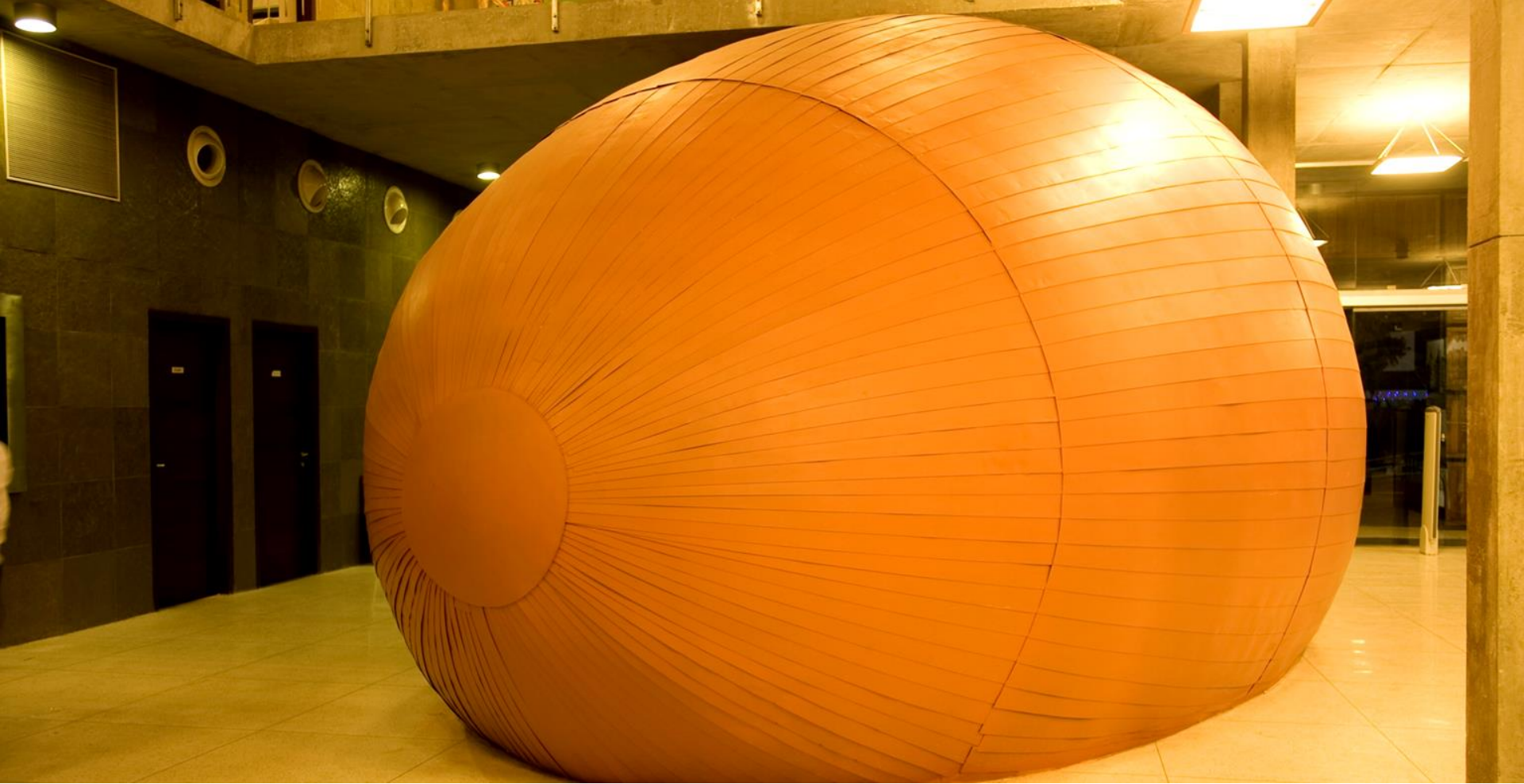
05. CONTENT PANELS AND LIGHTING- DISPLAY AREA



06. CONTENT PANELS AND LIGHTING- DISPLAY AREA



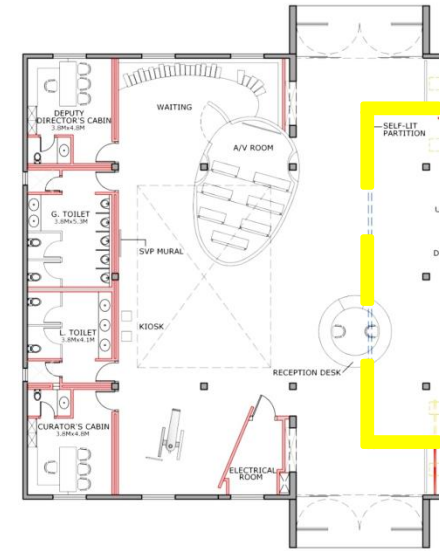
Just as you enter the museum, a huge egg shaped object thrust partly into the ground catches your attention. Metaphorically taking as an egg as the beginning of the civilization, this dynamic form is chosen for the Audio-Visual Room. This A/V room has a seating capacity of around 20 persons and the idea is to run shows of relevant movies in this space. The interior of 'the Egg' is very cosy and totally cuts the visitor off from the world outside as he gets indulged in the multimedia experience. Presently, the A.V. room features a 20 minute enacted history of the city adapted to make it very entertaining and informative for the children.







09. THE EGG- A.V. ROOM



### THE HERITAGE WALL

Separating the museum display area from the arrival lobby and reception space is a back lit partition wall. The principal intention of the wall was to screen the exhibition from the visitor so that there is some element of surprise as he starts his journey to explore the history in the display area. This wall graduated to displaying high quality large pictures of historically important architectural marvels of Surat. There is a small introductory text along with each of this picture explaining the significance of the structure.



11. HERITAGE WALL



• SURAT • AHMEDABAD • HYDERABAD

ESSTEAM DESIGN SERVICES LLP

contact us

office.essteam@gmail.com | +91 99090 16610

visit us

 [www.essteam.in](http://www.essteam.in)

 [www.facebook.com/EssTeam](https://www.facebook.com/EssTeam)

 [www.instagram.com/studio\\_essteam/](https://www.instagram.com/studio_essteam/)

4<sup>th</sup> Floor, 'Samanvay', Near Chandni Chowk, Piplod, Surat – 395007 INDIA.

