



## SRK HOUSE

*Architectural Design for a Diamond Processing Factory and Office*

Client:	M/s Shree Ram Krishna Exports
Site Location:	'SRK House', Swami Parmanand Marg, Near Gajera Circle, Katargam, Surat
Plot Size:	45,760 sq ft / 4,250 sq m
Construction Area:	2,25,000 sq ft / 20,903 sq m
Cost of Project:	Confidential
Year of Completion:	2018
Services:	Architectural Planning, Interior Design, Landscape, MEP Integration, Art Integration
Firms Involved:	EsTeam, Oblique



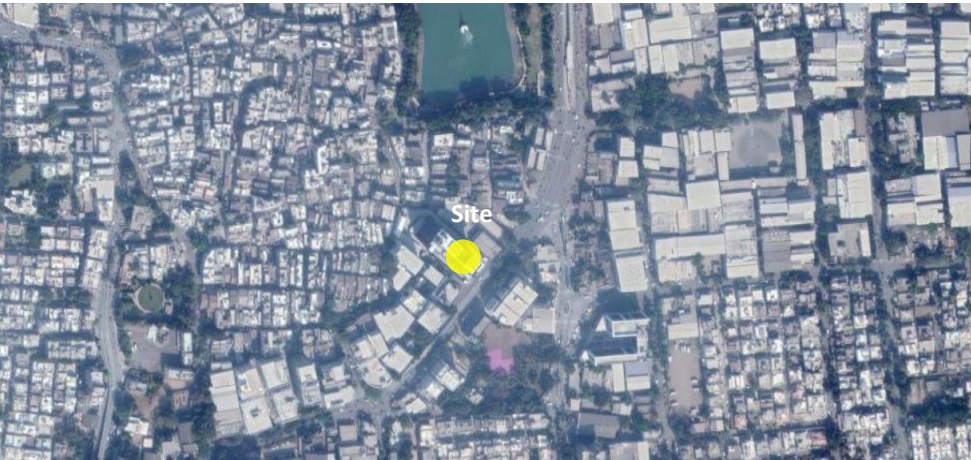
## THE PROJECT:

The client is one of the global leading firms in diamond processing and finishing. It ranks in the top 5 in the world in terms of the turn-over. This project is a continuing relationship with the client for a number of projects including their first factory. As a client, they are convinced and wedded to the philosophy of sustainability. So even their previous factory is LEED Certified as Platinum in 2011. And this factory is expected to be Platinum rated this year as well.

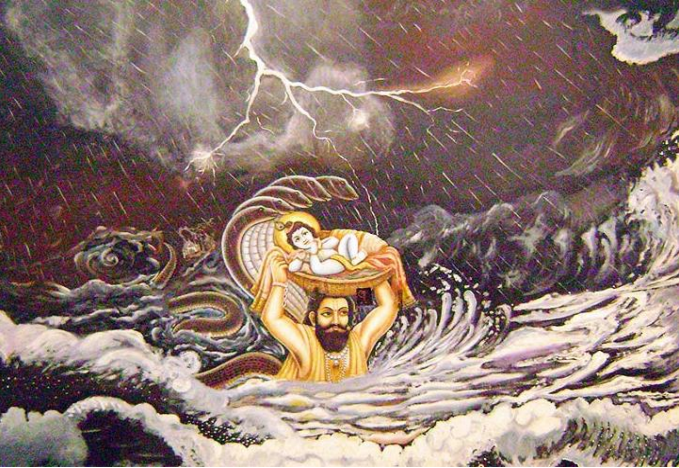


## THE SITE:

The site is located in an industrial area in the city of Surat amidst old city structures. It is a plot with 4250 sq m area and is one of the tallest building in the vicinity. It consists of 9 floors consisting of spacious internal area with adequate light and wind.







CELEBRATION OF BIRTH



CELEBRATION OF HOLI



A BRIDGE 'RAM SETU'



LORD RAMA WORSHIP OF LORD SHIVA

The role of water in various instances of the story of Lord Rama and Lord Krishna became the inspiration for the main executive entrance for the visitors to the premise. The play of water with a religious mood would create a memorable experience for people entering the premises.

DESIGN INTENT



As an element of surprise, when you enter the ground floor, it is water. In the water, a snake is inlaid in gold in the flooring and the reception seems like a floating surface over it. All the four religious stories are depicted in various ways through numerous materials and ideas in an artistic manner.





THE AQUA LOUNGE





THE AQUA LOUNGE

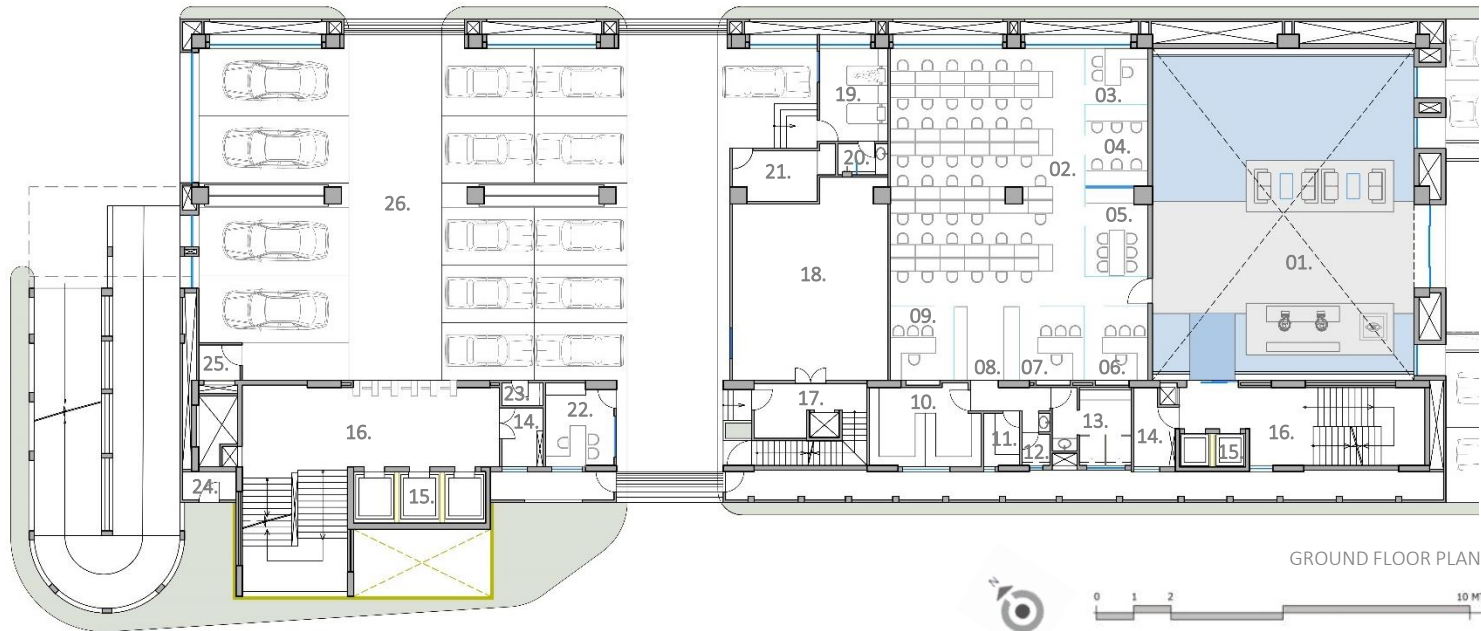




SITE PLAN



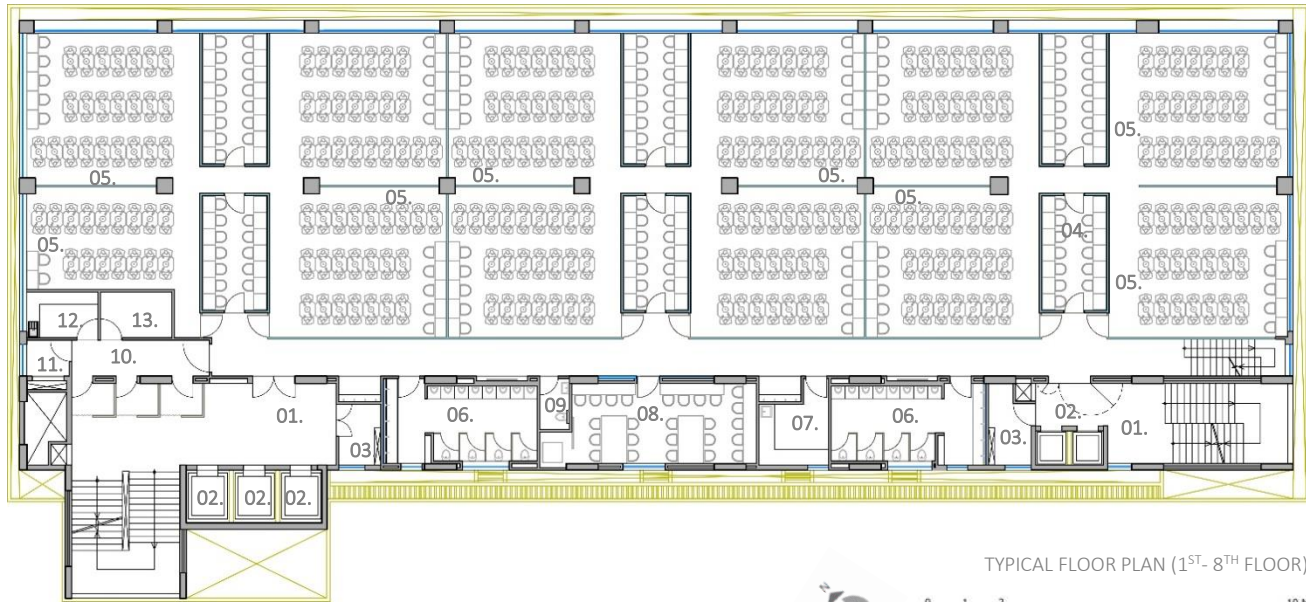
PLAN



GROUND FLOOR PLAN

- 01. AQUA LOUNGE
- 02. WORK STATION
- 03. ADMIN HEAD
- 04. PACKAGING & FORWARDING
- 05. MEETING DOOR
- 06. DTC CABIN
- 07. HR HEAD
- 08. PRINTING STATION
- 09. ACCOUNT HEAD
- 10. FILE STORAGE
- 11. PANTRY
- 12. FEMALE TOILET
- 13. MALE TOILET
- 14. ELECTRIC ROOM
- 15. LIFT
- 16. LOBBY
- 17. KITCHEN STORAGE (A)
- 18. KITCHEN STORAGE (B)
- 19. GUEST ROOM
- 20. TOILET
- 21. GENERAL STORE ROOM
- 22. SECURITY HEAD CABIN
- 23. TOILET FOR DRIVERS
- 24. STORE
- 25. HUB ROOM
- 26. PARKING





TYPICAL FLOOR PLAN (1<sup>ST</sup>- 8<sup>TH</sup> FLOOR)

- 01. LOBBY
- 02. LIFT
- 03. ELECTRIC ROOM
- 04. MANAGER
- 05. POLISHING
- 06. MALE TOILET
- 07. BOILING ROOM
- 08. F-I-C CABIN
- 09. FEMALE TOILET
- 10. CHECKING SPACE
- 11. HUB ROOM
- 12. PANTRY
- 13. STORE ROOM



EXECUTIVE FLOOR PLAN

- |                     |                       |
|---------------------|-----------------------|
| 01. RECEPTION       | 15. FUTURE EXPANSION  |
| 02. P.A. CABIN      | 16. LOBBY             |
| 03. CABIN           | 17. LIFT              |
| 04. DIRECTOR OFFICE | 18. ELECTRICAL ROOM   |
| 05. LOUNGE          | 19. SERVICES          |
| 06. PRIVATE ROOM-1  | 20. UPS/ BATTERY      |
| 07. PRIVATE ROOM-2  | 21. SERVER ROOM       |
| 08. TERRACE GARDEN  | 22. MONITORING ROOM   |
| 09. CONFERENCE ROOM | 23. PANTRY            |
| 10. BUYERS CABIN -1 | 24. TOILET            |
| 11. BUYERS CABIN -2 | 25. GUEST ROOM        |
| 12. BUYERS CABIN -3 | 26. STRONG ROOM       |
| 13. BUYERS CABIN -4 | 27. THE ELITE GALLERY |
| 14. EXTRA CABIN     |                       |







BLACK GRANITE



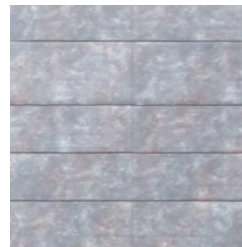
TEXTURED PAINT



BLACK & GOLD  
ITALIAN MARBLE



ITALIAN MARBLE



NEOLITH TILE



TEAK WOOD



FABRIC



GLASS



WATER







THE FAÇADE





THE FAÇADE



ENTRANCE





EXECUTIVE WAITING LOUNGE



EXECUTIVE WAITING LOUNGE





EXECUTIVE LOUNGE





TERRACE GARDEN







TERRACE GARDEN





EXECUTIVE DINING AND LOUNGE





EXECUTIVE DINING AND LOUNGE





CONFERENCE ROOM





"I AM NOTHING.  
BUT I CAN DO ANYTHING"

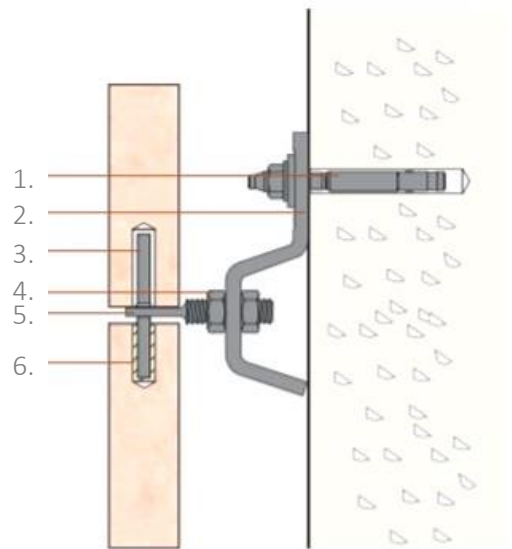
CONFERENCE ROOM



1. SUSTAINABILITY

2. EFFICIENCY OF SPACE

3. ART INTEGRATION



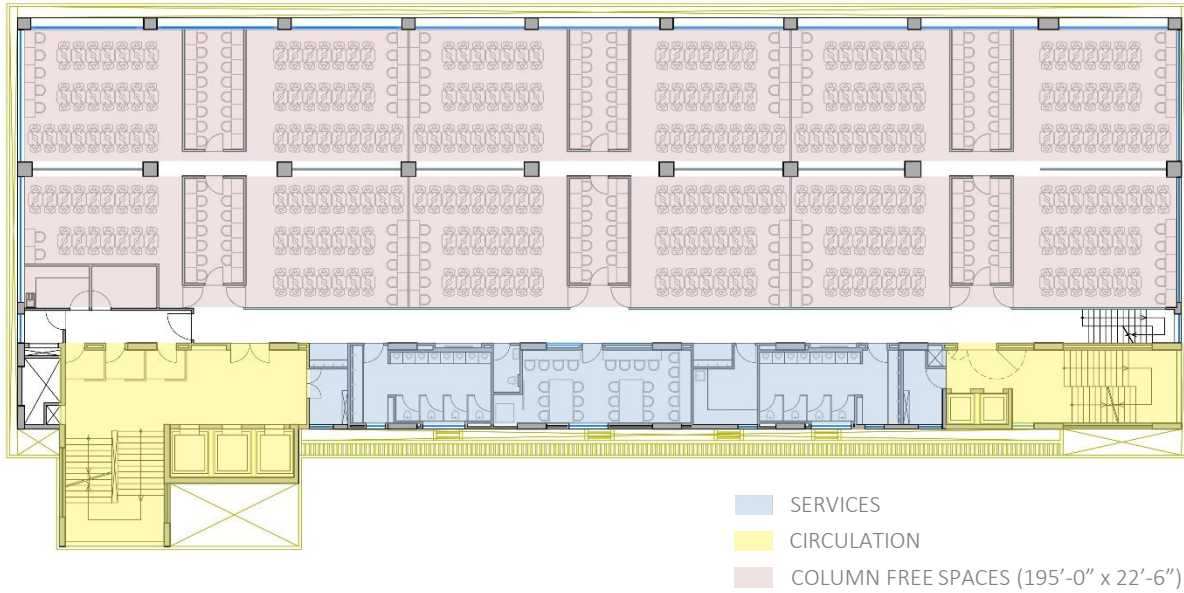
1. Anchor Bolt
2. Z-bracket
3. Pin
4. Nut
5. Flat head bolt
6. Plastic tube

WALL SECTION



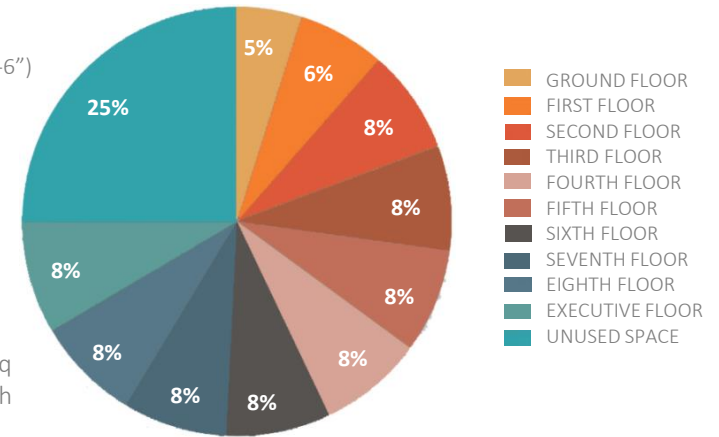
Having air insulation between the civil work and the tiles, that are put with a dry cladding system, protects the walls from direct heating. All the glasses are reflective and double glazed units reducing the heat increase substantially, making it sustainable.





Air conditioning units and electrical rooms are well resolved and located in a way that they do not occupy much space but they give a lot of flexibility in the diamond industry. Flexibility is an essential part of the design, as the process and technology change rapidly so they need to change the internal layouts accordingly.

According to the area calculated, the floors consists of 1175 sq m of usable spaces out of the total 1499 sq m of area, that is up to 75% of the total area. The two entirely column- free work areas are 195 ft in length and 22 ft wide.



## 02. EFFICIENCY OF SPACES

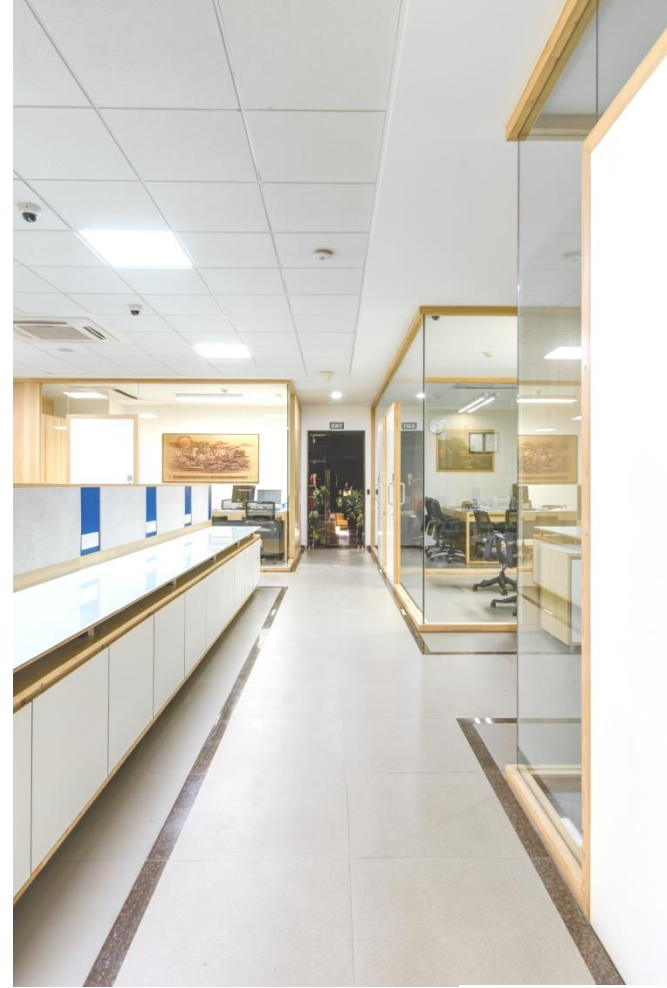


WORKSTATION





WORKSTATION



WORKSTATION





DIRECTOR'S CABIN



DIRECTOR'S CABIN







DIRECTOR'S CABIN



DIRECTOR'S PRIVATE CABIN 01





DIRECTOR'S PRIVATE LOUNGE



DIRECTOR'S PRIVATE CABIN 02







'TRACES'

This artwork in the Director's office wall is inspired from the Clients' need to have wall clocks depicting current times of various cities across the world where their offices are located. So we thought why not also add a 3D graphic of the city itself alongwith the clocks in a colorful beautiful way!

Materials: These set of murals depict the various parts of the cities as 3D blocks made of MDF having different heights and colors. The roads are in the base plane whereas all the built mass have height and are painted in different shades.



'AMALGAMATION OF FOUR METALS'

This very dynamic and interesting lounge wall artwork strives to depict the beauty within something we perceive as- chaos. Even though we may not understand the logic behind the creation, the visual result of this is something appealing and beautiful. The different depths and colors add to the complexity of the design.

Materials: This complex mural is created out of 4 different metals- copper, brass, stainless steel and painted mild steel and each of these layers are at different distances from the wall giving a depth to the mural.

03. ART INTEGRATAION





'HEARTS AND ARROWS'

The Hearts & Arrows pattern is a symbol of perfection- it is only visible in a perfectly cut, round, brilliant diamond! This artwork aims to exhibit that perfection through this pattern while also using beautiful colors to enhance the beauty of the theme on the Reception wall. So it is basically an abstract composition of full and partially cut diamonds with the Hearts & Arrows pattern.

Materials: The materials and techniques used for making this artwork are laser-cut brush- finished stainless steel, plywood wrapped with canvas and manual artistic paint.



• SURAT • AHMEDABAD • HYDERABAD

ESSTEAM DESIGN SERVICES LLP

contact us

office.essteam@gmail.com | +91 99090 16610

visit us

 [www.essteam.in](http://www.essteam.in)

 [www.facebook.com/EssTeam](https://www.facebook.com/EssTeam)

 [www.instagram.com/studio\\_essteam/](https://www.instagram.com/studio_essteam/)

4<sup>th</sup> Floor, 'Samanvay', Near Chandni Chowk, Piplod, Surat – 395007 INDIA.

