

## ESSTEAM DESIGN SERVICES LLP

*Interior Design for Architect's Own Office*

Client:	M/s EssTeam
Site Location:	4 <sup>th</sup> Floor, 'Samanvay', Near Chandni Chowk circle, Gymkhana Road, Piplod, Surat, Gujarat- 395007
Construction Area:	8,050 sq ft / 748 sq m (carpet area)
Cost of Project:	Confidential
Year of Completion:	2013
Services:	Interior Design, MEP Integration, Art Integration
Firms Involved:	EssTeam, Oblique



## THE PROJECT:

We are an architectural firm which promotes sustainable built environment. So when the opportunity arose to do the interiors of our new office, it was a perfect opportunity to 'Walk the Talk!' The project thereby offers a wonderful opportunity to test self-conviction and understanding about design. After 12 years of professional practice, designing a new office building from scratch became quite interesting for us.

## THE SITE:

The site is located in a posh locality of the city of Surat. Housed in the low-rise building 'Samanvay', which is also designed by EssTeam, the office occupies the 4th and 5th floor of the building. Half of the 3rd floor is used for recreational amenities and half of the basement houses the material library. We have rights of the terrace and is developed into a garden with the board room. Each floor plate measures about 2,600 sq ft of area and total carpet area being used by us in the building is about 8,050 sq ft.



It all began in 2002 as S. Team Design Services in an 1100 square feet office by adaptively reusing a maternity clinic in the heart of old city of Surat. After 18 years, & over 550 projects, and all the proactive perseverance, we desired to design EssTeam as a zero- waste building. Now the office has transformed into a 75 members, strong, qualified and experienced team. Various verticals and sister firms evolved here to create the bouquet rendering multiple services from one office.



2002 - 2012

2013 - NOW



'SAMANVAY' - THE EXTERIORS



'SAMANVAY' - THE EXTERIORS

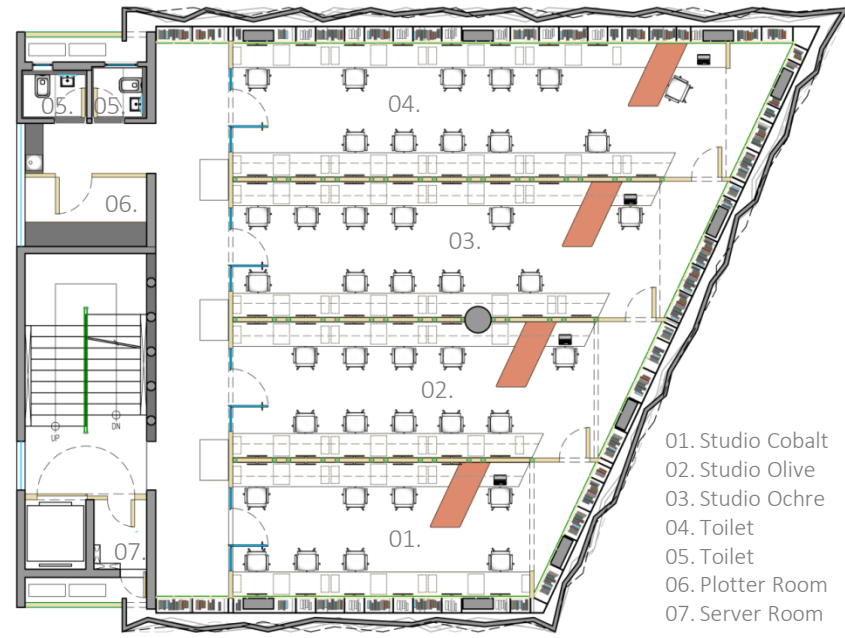
The floors were divided keeping in mind the functionality of each floor. The design thereby included the Public floor, Studio floor and the Deliberation floor also taking care of the office hierarchy.



FOURTH FLOOR PLAN  
(PUBLIC FLOOR)



- 01. Reception
- 02. Waiting Area
- 03. Pantry
- 04. Toilet
- 05. Meeting Room
- 06. Meeting Room 3
- 07. Meeting Room 4
- 08. Administration
- 09. Lounge
- 10. Store
- 11. Meeting Room 2
- 12. Meeting Room 1
- 13. Server Room



FIFTH FLOOR PLAN  
(STUDIO FLOOR)



- 01. Studio Cobalt
- 02. Studio Olive
- 03. Studio Ochre
- 04. Toilet
- 05. Toilet
- 06. Plotter Room
- 07. Server Room



We set a goal for ourselves to make this building a zero-waste building, thereby calling it project 'Zero'. In doing so, any waste generated during construction would be consumed in the interiors of the building. Reinforced steel welded into an artistic mesh as a staircase railing and empty containers from PU Polish material were painted in vibrant colors forming a personal mailbox for the team members of the office.



Creating a benchmark in resource conservation and management, by reusing every waste created in the process of construction of the buildings and the interiors, for doing up the interiors for the project viz. the shuttering plywood, the shuttering wood, etc. The Scaffolding bamboos were tied together along the terrace parapet acting as a privacy screen and a shading device. Stone waste was used in constructing a seating along the terrace periphery as well as in the common toilet on the ground floor. Cement sheets brought for protecting the finished furniture was used for lining the fabricated roof of the conference room. An existing palm tree that fell on the site was neatly chopped and arranged as outdoor dining furniture set for ten people. We operate through a 10,000 sq ft award- winning and Zero- waste interiors self owned office premise. The office has Platinum- rated Green Interiors by Indian Green Building Council.





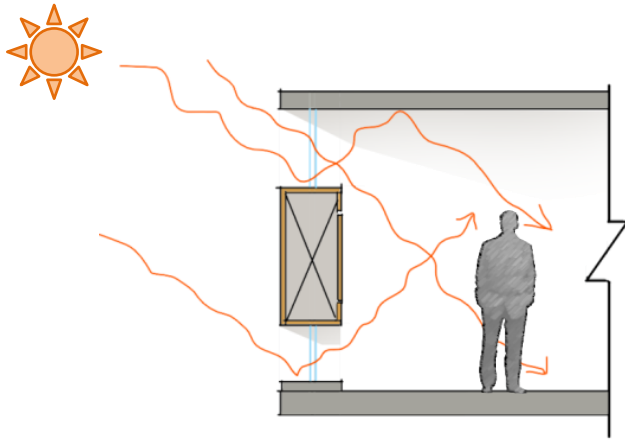
01. ZERO WASTE- 'WASTE REINFORCEMENT BARS RAILING'



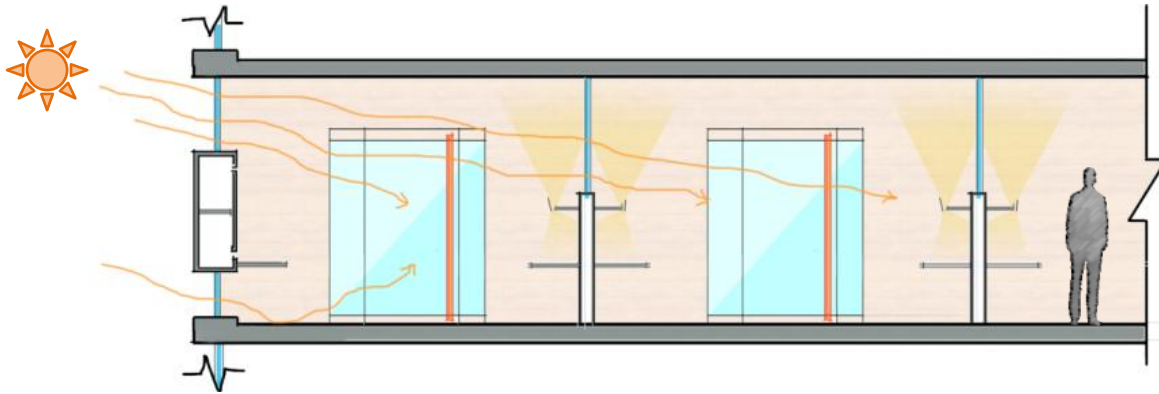
01. ZERO WASTE- 'PU- POLISH CONTAINERS AS PERSONAL MAILBOXES'



01. ZERO WASTE- 'SHUTTERING WOOD PARTITIONS'



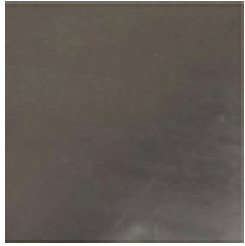
The building is finished in form- finished RCC from inside as well as the outside and for allowing daylight, there is a 450 mm ribbon window on the bottom and a 900 mm ribbon window on the top of each floor level running all around the three elevations of the building. The northern rectangular block takes care of the vertical circulation, sanitation requirements and the spaces needed for various other services. For energy management, the architecture of the building provides daylight due to the ribbon windows at the top and bottom on every floor, drawing maximum daylight throughout the day. Equipments such as pumps, elevators, AC'S etc are selected to make the building energy efficient. 9 inches thick layer of soil filling on the terrace floor keeps the slab cool and creates an impact on the fifth floor AC energy consumptions as well as acts as a green terrace garden.



## 02. ABUNDANT DAYLIGHTING



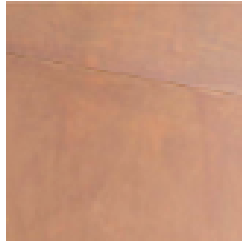
02. ABUNDANT DAYLIGHTING- MEETING ROOMS



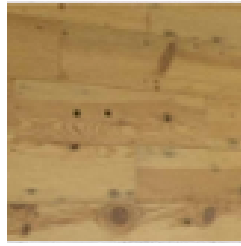
CONCRETE  
FLOORING



FORM FINISHED  
CONCRETE



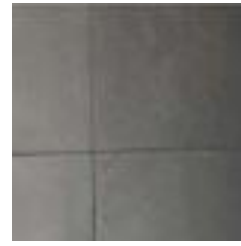
MILD STEEL



PINE WOOD



CEMENT SHEET



KADAPPA STONE



G. I. PIPES

For easy maintenance, the entire material palette is linked to the philosophy of honesty making pure use of its natural forms. For waste management too materials were very crucial, the key criteria for selecting the stained and hardened cast- in- situ cement concrete flooring, is that it generates minimal wastage.

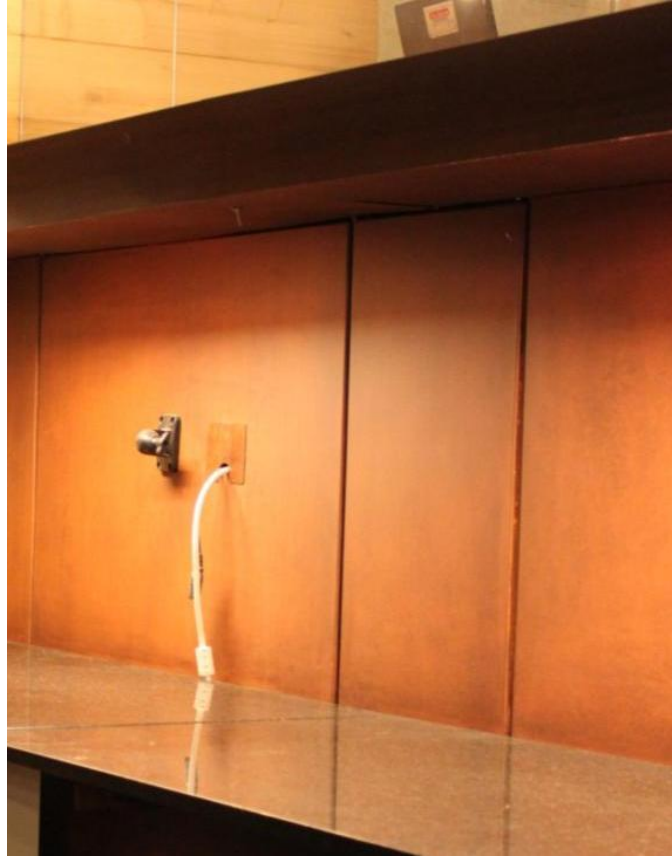


03. BUILT TO LAST- RECEPTION AREA



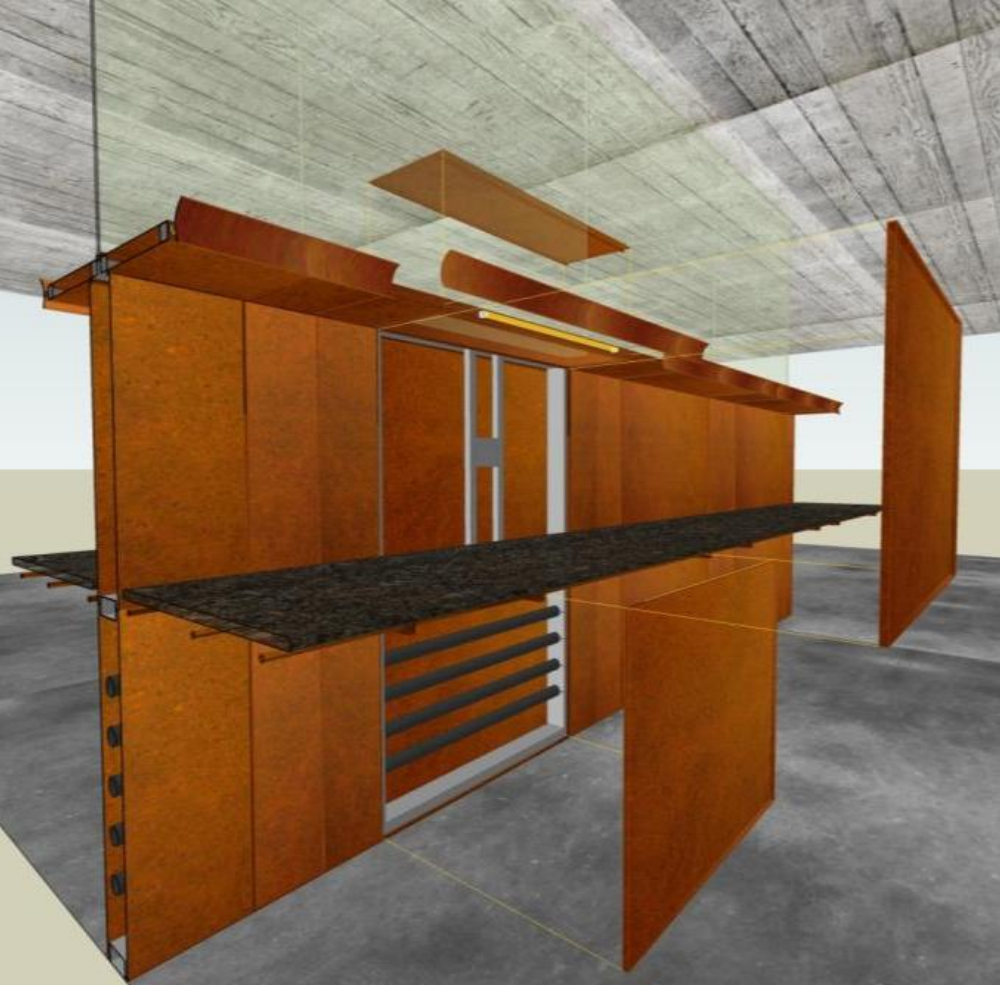
03. BUILT TO LAST- WAITING AREA AND 'ON THE TOES' TABLE





Further, the modular furniture is very ergonomic and indigenously designed using Mild Steel and magnets. This screw-less system is easy to dismantle to take changes in future including wiring and accommodating new technologies. Another innovation is in terms of the service routes hidden the peripheral storage areas. This would again make any of the utility very easy to service or repair or replace.

#### 04. EASY TO MANAGE FURNITURE



04. EASY TO MANAGE FURNITURE

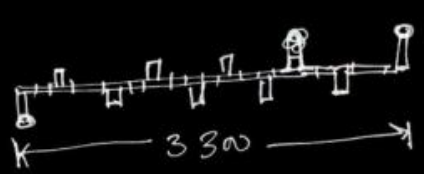


04. EASY TO MANAGE FURNITURE- STUDIO SPACE

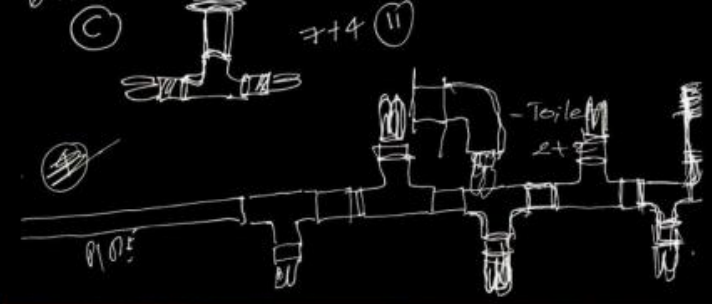
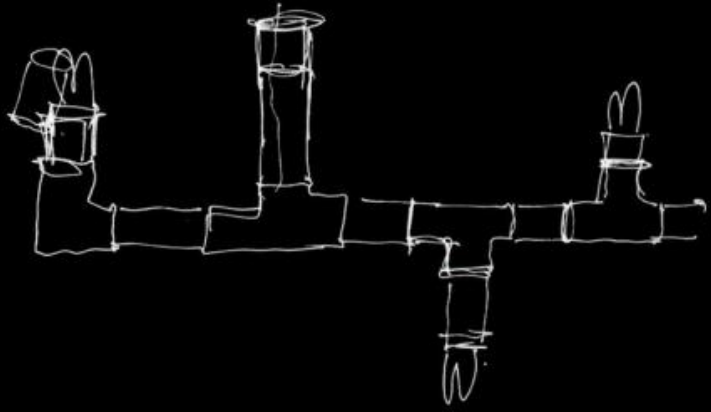


In an office, the maximum number of complaints that we have received till date is about the high degree of maintenance required in the door closers. This led us to the creation of a door closer which works on gravity and we assure a performance guarantee of life time. It works on a counter weight suitable for the weight of the door and a couple of pulleys to put the weight in its right location.

#1 Conference room



(F) Snah 21  
 (G) S210n!!



The light fixtures were designed by reusing G.I. Pipes to keep them modular, easy to maintain and changeable whenever necessary. They were easy to assemble and creatively used to give a raw look with the exposed concrete ceilings. The entire philosophy behind these light fixtures was similar to that of the flowing water from the pipes, thereby depicting the flow of light from the same- lighting up all the spaces.



06. THE LIGHT FAMILY



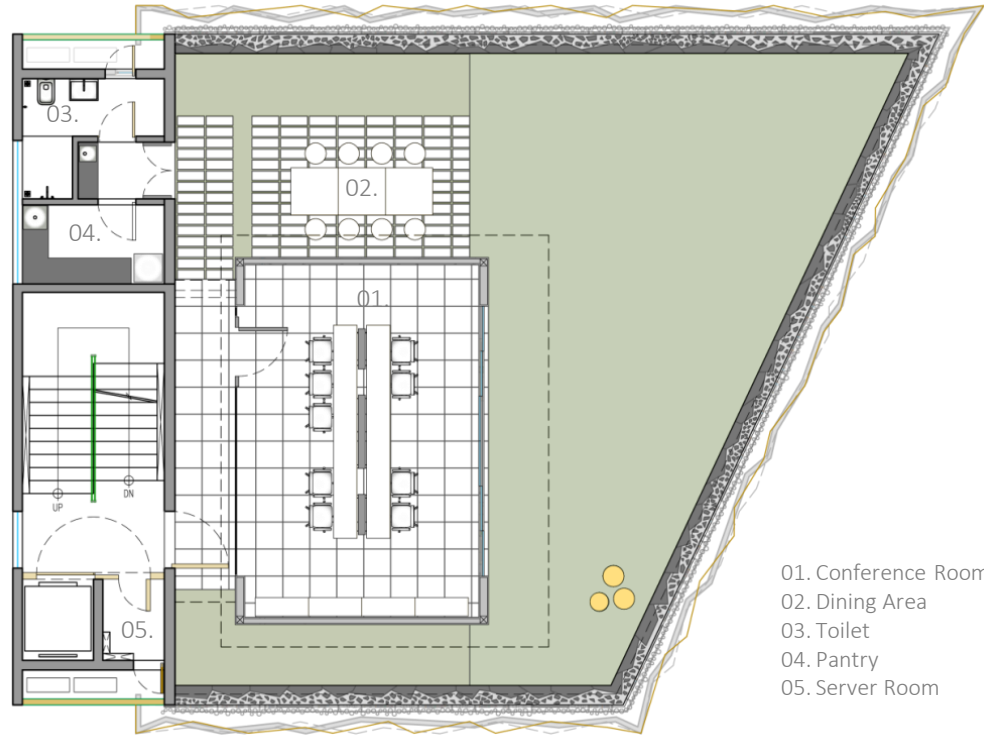
06. THE LIGHT FAMILY- LOUNGE



06. THE LIGHT FAMILY- STUDIO SPACE



Equipments such as pumps, elevators, AC'S etc are selected to make the building energy efficient. 9 inches thick layer of soil filling on the terrace floor keeps the slab cool and creates an impact on the fifth floor AC energy consumptions as well as acts as a green terrace garden.



- 01. Conference Room
- 02. Dining Area
- 03. Toilet
- 04. Pantry
- 05. Server Room

TERRACE FLOOR PLAN





07. MITIGATING THE HEAT ISLAND EFFECT- TERRACE



07. MITIGATING THE HEAT ISLAND EFFECT- CONFERENCE ROOM



• SURAT • AHMEDABAD • HYDERABAD

ESSTEAM DESIGN SERVICES LLP

contact us

office.essteam@gmail.com | +91 99090 16610

visit us

 [www.essteam.in](http://www.essteam.in)

 [www.facebook.com/EssTeam](https://www.facebook.com/EssTeam)

 [www.instagram.com/studio\\_essteam/](https://www.instagram.com/studio_essteam/)

4<sup>th</sup> Floor, 'Samanvay', Near Chandni Chowk, Piplod, Surat – 395007 INDIA.



# Bedankt